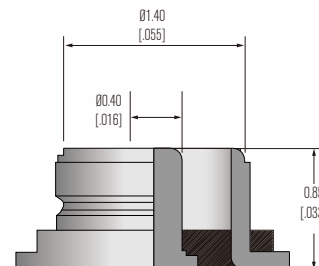


Probe mm.[inch]

## STRUCTURE-FEATURE

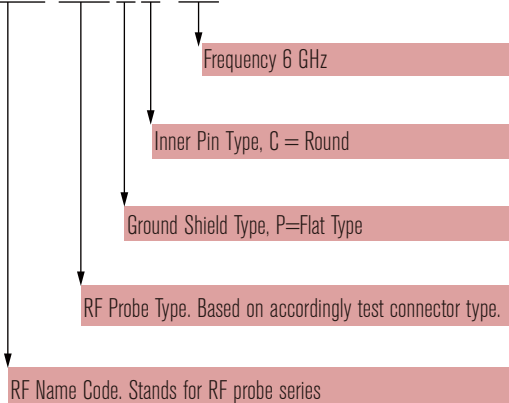
ELECTRICAL		MECHANICAL & ENVIRONMENTAL	
Voltage Rating	30 V Max	Installation Hole Size:	3.85[.152]
Frequency Range	DC to 6 GHz	Max Stroke:	2.0[.079]
Impedance	50 Ohm	Durability:	100000 cycles
Insulation	5000 MOhm. min.	Temperature	-40 ~ +85 °C
V.S.W.R	1.3max(DC ~ 3GHz)		
	1.6max(3 ~ 6GHz)		
Insertion Loss	0.50dB(DC ~ 3GHz)		
	0.80dB(3 ~ 6GHz)		
Withstanding Voltage:	AC300V+/-20V		

## APPLICATION



## RF PROBE ORDER

### FTOP-804PC-6G



1. SMA female will be preferred design if no required.
2. Different type connectors can be designed.
3. Please contact us for customized issue.