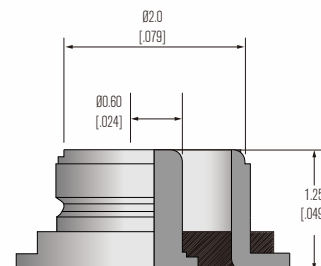


## STRUCTURE-FEATURE

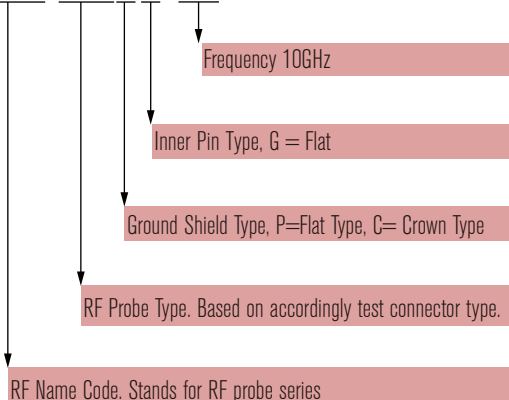
| ELECTRICAL            |                    | MECHANICAL& ENVIRONMENTAL |               |
|-----------------------|--------------------|---------------------------|---------------|
| Voltage Rating        | 250V Max           | Installation Hole Size:   | 11.5[.453]    |
| Frequency Range       | DC to 6 GHz        | Max Stroke:               | 2.0[.079]     |
| Impedance             | 50 Ohm             | Durability:               | 10000 cycles  |
| Insulation            | 5000 MOhm. min.    | Temperature               | -55 ~ +165 °C |
| V.S.W.R               | 1.3max(DC ~ 10GHz) |                           |               |
| Current               | 1A                 |                           |               |
| Withstanding Voltage: | 500 V DC           |                           |               |

## APPLICATION



## RF PROBE ORDER

### FTOP-367PG-10G



1. SMA female will be preferred design if no required.
2. Different type connectors can be designed.
3. Please contact us for customized issue.